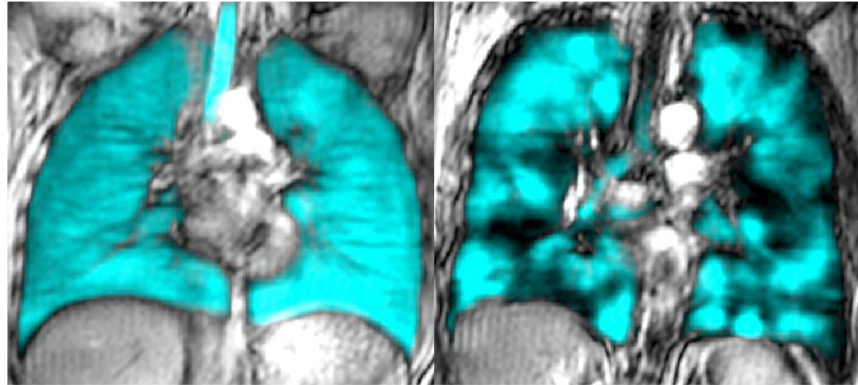


HLI MRI Imaging Core Services and Announcement of MRI Core Manager

New HLI-St. Paul's 3T MRI



Hyperpolarized ^{129}Xe MRI in Clinical Research



Healthy Control

COPD Participant

Our new 3T MRI (Magnetic Resonance Imaging) and ^{129}Xe hyperpolarizer will soon be ready for research project use and will provide a unique and powerful tool to pair with bench and clinical research.

The MRI and hyperpolarizer are located in the Radiology suite on the 2nd floor of the Providence building. We will have time set aside for exclusive research use, 16 hours available per week for approved and funded research projects for which HLI PI's will have prioritized use. Similar to HLI core service billing, fees will be billed to each investigator for use. Quotes can be created for fund confirmation.

Please welcome Dr. Rachel Eddy (right), who is a post-doctoral fellow in the Sin lab group and along with her own MRI and polarizer research projects, will be taking on the role of HLI- MRI Core manager. You can contact her at rachel.eddy@hli.ubc.ca.

Information and external contact info (mri@hli.ubc.ca) are in the process of being added to our HLI website services menu.

